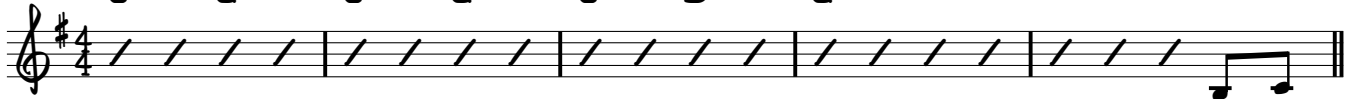


A Hymn to Don Bosco

P. Buzon

Intro

C G C G C D G



Is there

Str.

G G^{maj7}/F# F D(SUS4) D7



pro-mise for the young_ to-day? Is there a rea-son to live on?_ Think of
hea-ven for the young_ to-day. There is free-dom to en-joy._ And the

G G^{maj7}/F# F D(SUS4) D7



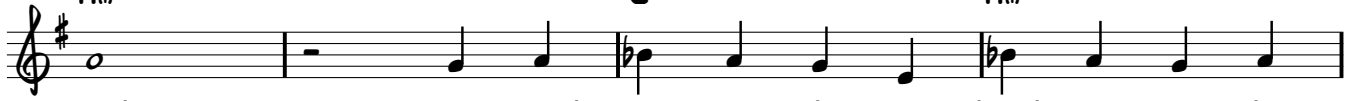
all the was-ted mo-ments; will they ev-er be re-stored?_ Is there
vis-ions of. to-mor-row give a sense of liv-ing on._ There are

E_m E_m(^{maj7})/D# E_m⁷/D A/C#



mean-ing in these emp-ty shows? Nev-er will we find that peace,_ let's not pre
depths of friend-ship to ex-plore. And the call of ser-vice brings_ a las-ting

A_m C7 A_m⁷



tend. We need some-one who can lead us to the
joy. We need some-one who can lead us to the

F D(SUS4) 1. D7 2. D7



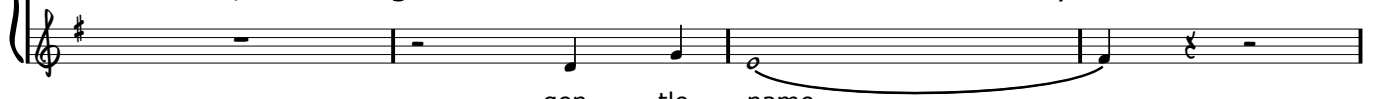
way!_ There is We call Don
way!_

Ref.

G G^{maj7}/F# C D7



Bos-co, a gen-tle name for child-ren of_ to-day._ We call Don



gen-tle name_

G G^{maj7}/F# C D7



Bos-co, a shi-ning flame_ that sends the glooma-way._ Be-hold a



shi-ning flame_

G Gmaj7/F# G7/F Cm7 (hold chord)

fath-er's hand, a friend's em-brace that light-ens your cares. Your

friend's em - brace

C G C G C D7 G

bur-den's bear when some-one shares his heart for the young of to-day—

Interlude G Gmaj7/F# F D7

uh uh

D.S. AL CODA

Coda G G Gmaj7/F# C D7 (NO REPEAT)

We call Don Bos-co, a gen-tle name for child-ren of to-day. We call Don

gen - tle name

G Gmaj7/F# C D7

Bos-co, a shi-ning flame that sends the glooma-way. Be-hold a

shi - ning flame

G Gmaj7/F# G7/F Cm7 (hold chord)

fath-er's hand, a friend's em-brace that light-ens your cares. Your

friend's em - brace

C G C G C D7 G G

bur-den's bear when some-one shares his heart for the young of to-day—

